



# POTTERS MILLS GAP



## TRANSPORTATION PROJECT POTTER TOWNSHIP, CENTRE COUNTY

**May 8, 2013**

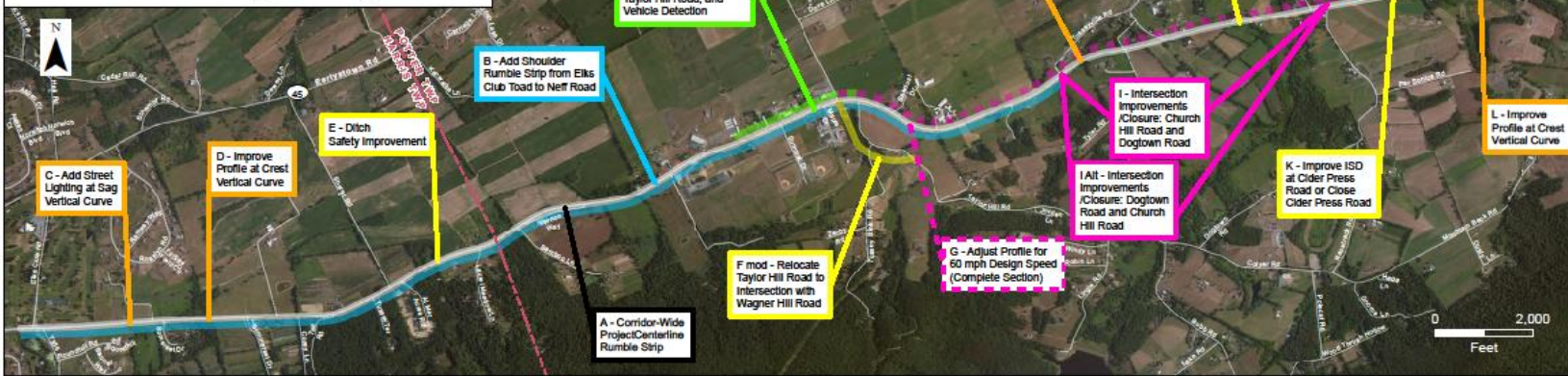
## PROJECT INTRODUCTION

# SR 322 Focus– Continuation of Safety Improvements

## Pennsylvania Department of Transportation, District 2-0

US 322 Corridor Improvement Projects

Harris & Potter Townships, Centre County, PA



# Project Overview

- Purpose

- Improve safety, reduce congestion, enhance mobility and alleviate access concerns

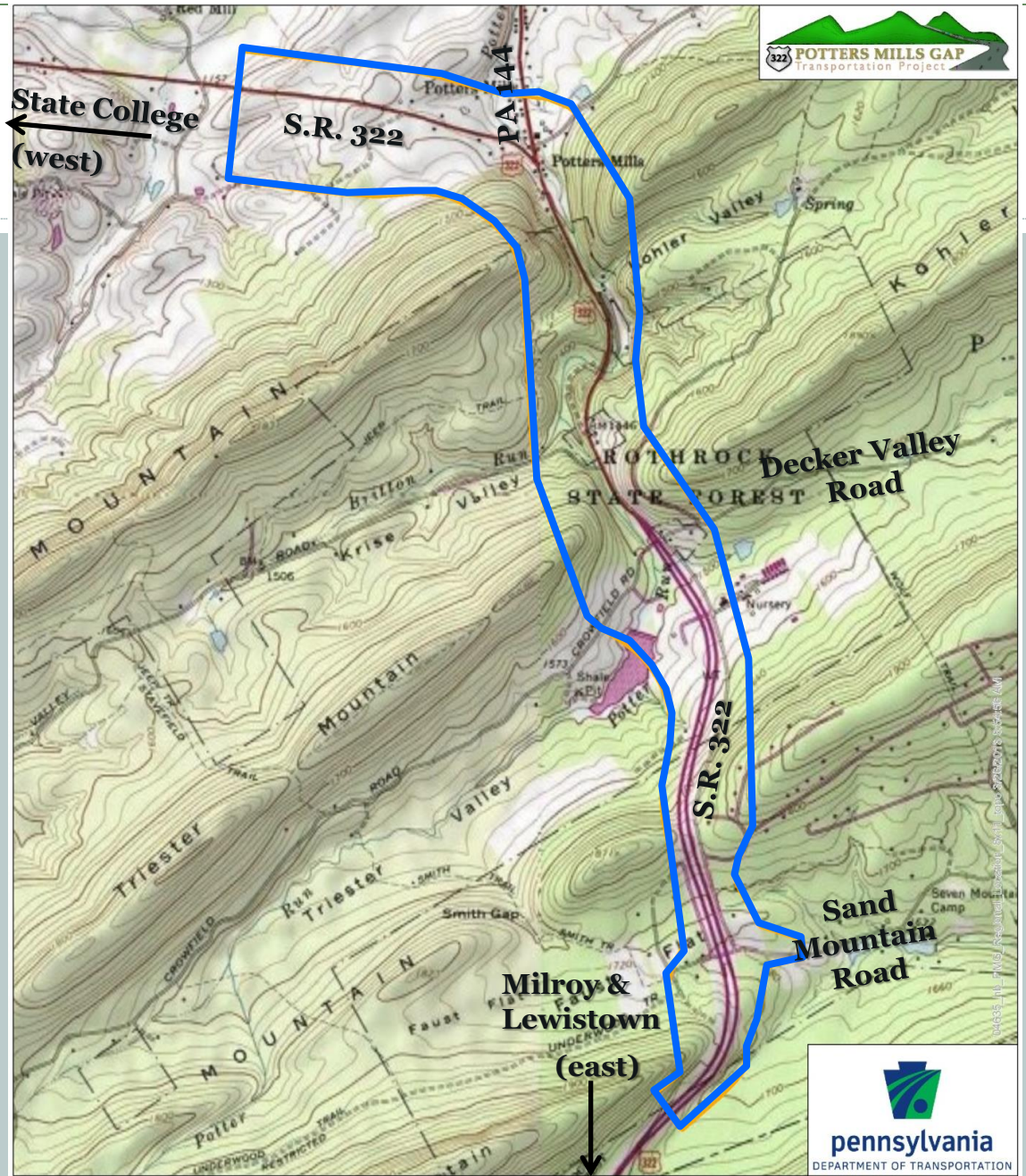
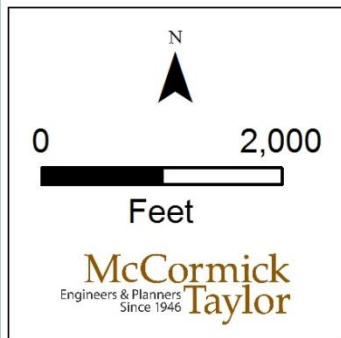
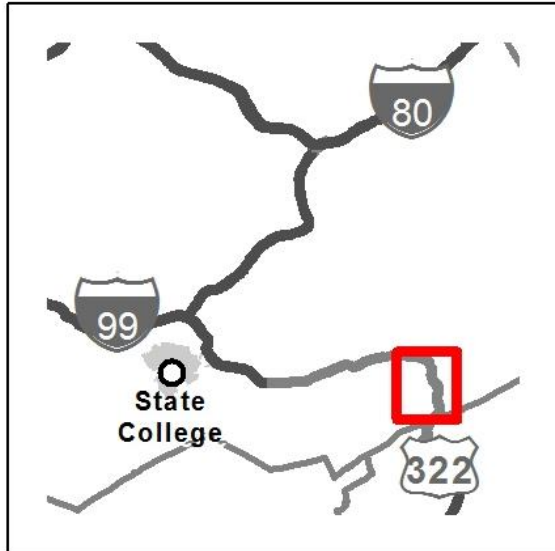
- Project Information

- MPMS#: 96706
- S.R. 0322, Section PMG
- Centre / Mifflin County line to west of S.R. 0322 / PA 144 intersection





# Project Location Map





- Higher than statewide average crash rates & fatality rates
- SR 322 horizontal curve & SR 144 skewed alignment
- Congestion and traffic speeds through SR 322/SR144 intersection.
- Westbound merge point traffic conflicts
- Sand Mountain Road and Decker Valley Road
- Area of falling rock





# Project Overview – Project Area Concerns

- Safety & Access

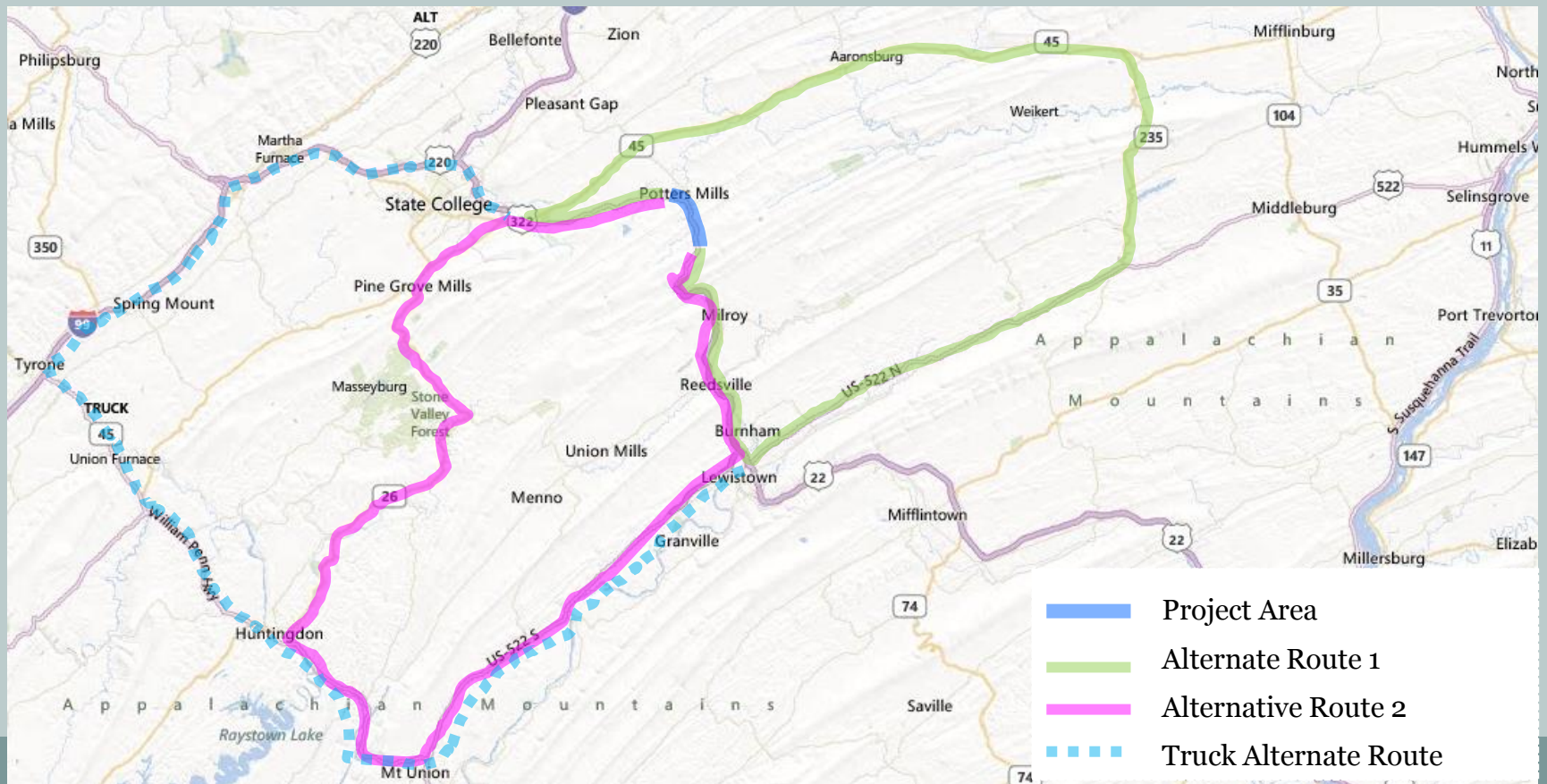
- Decker Valley Road and Sand Mountain Road

- ✦ At-grade intersection on limited access highway (driver expectations)
- ✦ Decker Valley – additional complication with merge point



# Project Overview – Project Area Concerns

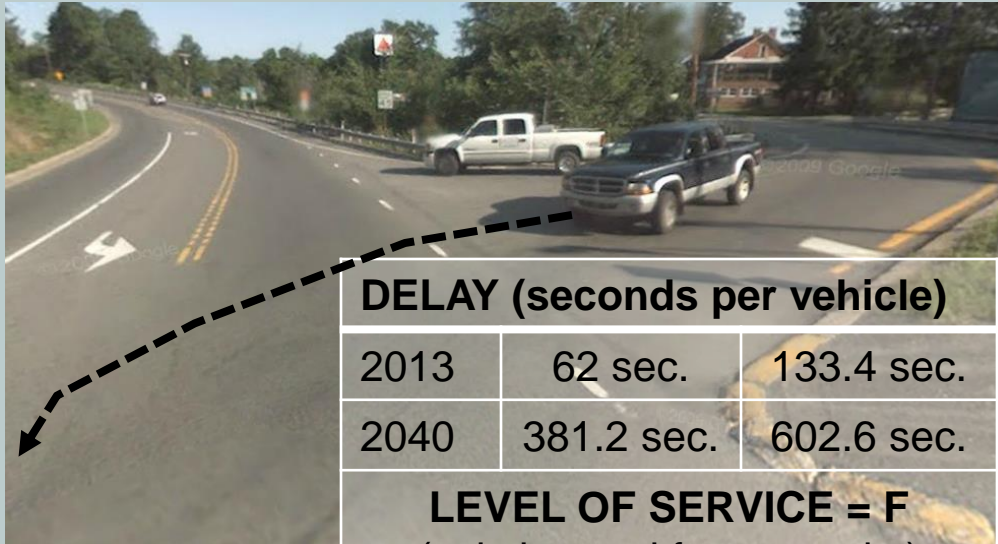
- Safety & Mobility
  - No good alternate route during incidents
  - Consistent Customer Complaints





# Project Overview – Project Area Concerns

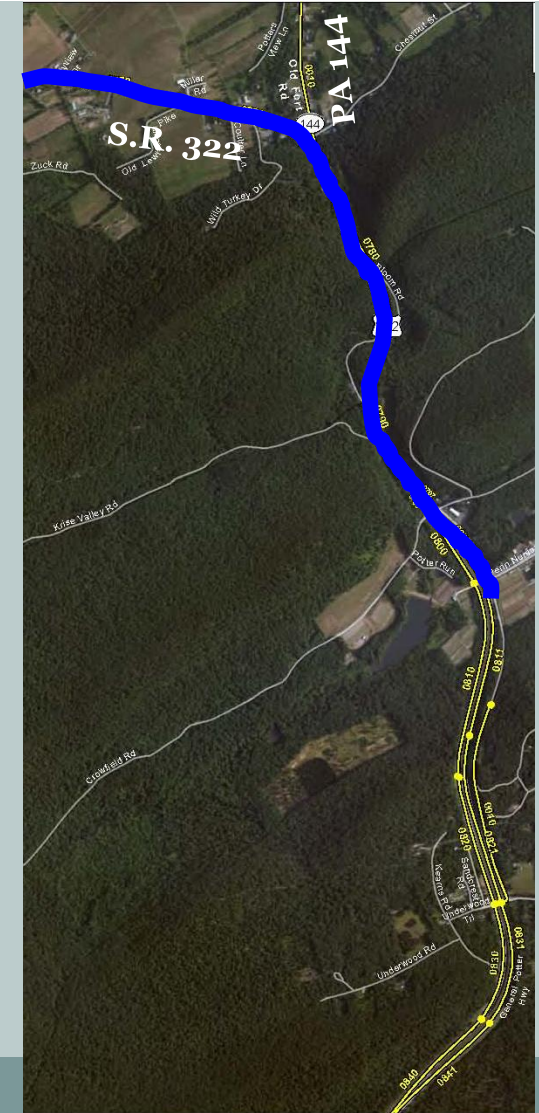
- Congestion
  - Congestion and mobility concerns caused by slow moving vehicles and traffic volumes
  - Substantial delay for left turns from SR 144 to SR 322 eastbound



## DELAY (seconds per vehicle)

2013	62 sec.	133.4 sec.
2040	381.2 sec.	602.6 sec.

**LEVEL OF SERVICE = F**  
(existing and future peaks)





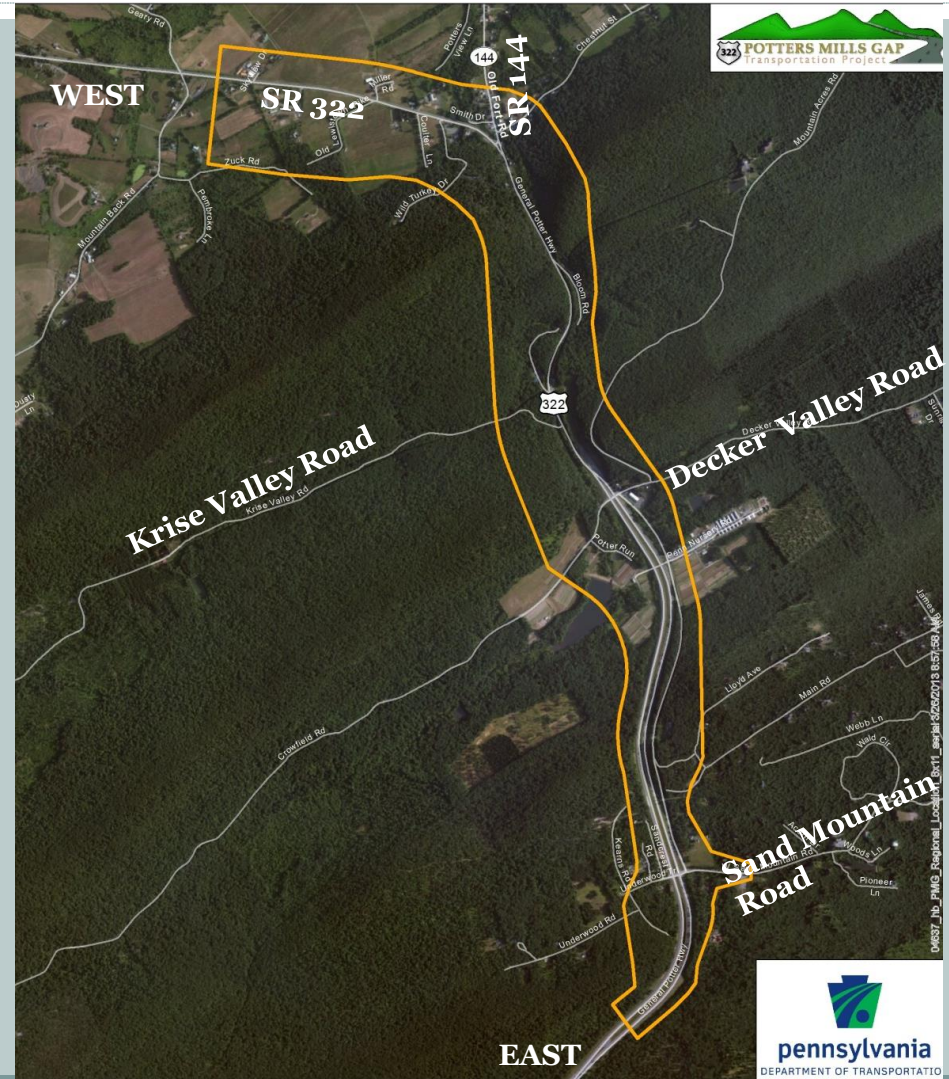


# Project Overview – Preliminary Needs

- **Safety, access and mobility concerns exist due to:**
  - Higher than average crash and fatality rates
  - Alignment, congestion & speeds through SR 322/SR 144 intersection
  - At-grade intersection conflict points and inconsistent driver expectations on a limited access facility
  - Area of falling rock
  - Frequent Roadway Closures due to inclement weather and traffic related incidents
- **Congestion**
  - Delay in SR 322 two-lane section and at SR 322/SR 144 intersection

# Project Overview – Logical Termini

- Western terminus
  - Approximately 3,000 feet west of the S.R. 322 / PA 144 intersection
- Eastern terminus
  - Centre/Mifflin County line



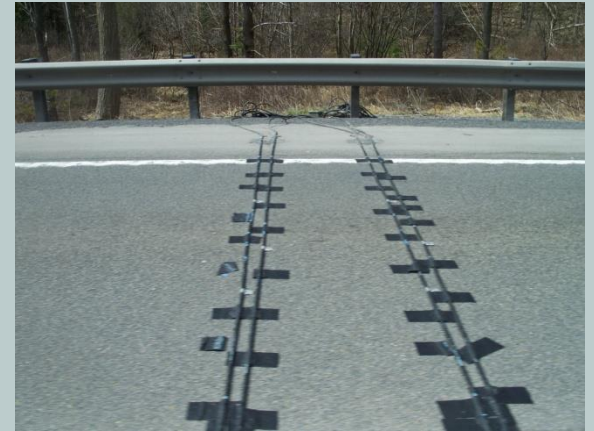


# Project Overview – Independent Utility

- Improvements will address:
  - Specific safety needs
  - Congestion needs related to truck volume and operating speeds
- Improvements serve a purpose:
  - Does not create need for additional improvements
  - Does not preclude foreseeable future improvements
  - Does not create a “loaded gun” situation

# Current Studies – Traffic Analysis

- Existing Annual Average Daily Traffic (AADT):
  - 11, 459 to 13,852 vehicles per day
  - 17 percent trucks (3,200 trucks per day)
- Traffic data collection and analysis
  - Intersection manual counts
  - Automatic Traffic Recorders
  - Slow vehicle delay analysis
- Crash analysis
  - Past 5 years of crash data
  - Incident management







# Project Overview – Known Environmental Features

- Listed and Eligible Cultural Resources
  - Penns-Brush Valley Historic District (Eligible)
  - Potter Allison Farm (Listed)
- Natural Resources (Wetlands and Streams)
  - Potter Run and Tributaries (CWF)
  - Tributary to Laurel Creek (HQ – CWF) – eastern terminus
  - Laurel Creek Reservoir is a public drinking water supply
  - Known wetland areas (some EV in water supply area)



# Project Overview – Known Environmental Features

- Agricultural
  - Productive Farmland
  - Agricultural Security Areas
- Threatened & Endangered Species
  - Three agencies require additional coordination
- Other Resources / Concerns
  - Possible sinkholes
  - Possible acid producing rock (pyrite)
  - Two State Forests



# Project Overview – Additional Environmental Features

- Field Studies / Data Collection
  - Hazardous Waste
  - Historic / Archaeology
  - Air and Noise
- Existing Databases / Mapping
- Agency Coordination
  - Environmental Concerns
  - Permitting





# Preliminary NEPA Processing Options

- NEPA Documentation
  - Environmental Assessment (EA)
  - Coordination with FHWA
- Section 4(f) Evaluation
  - Programmatic or Individual – To Be Determined





# Planned Public Involvement

- Potter Township Meetings
- Centre County MPO Meetings
- Intent to Enter Letters
- Future:
  - Emergency Service Providers, Township Officials, etc.
  - Quarterly legislative updates
  - ACM updates
  - Public Meetings

# Anticipated Schedule

- Project Needs Late Spring 2013
- Alternatives Summer 2013
- Environmental Decision Fall 2013
- Design Field View Fall 2013
- Final Design Winter – Summer 2014
  - Permitting
  - Utility Clearance
  - Right-of-Way Clearance
- Bid Letting Fall 2014

# Question & Answer

